



The Aylesbury Vale Academy

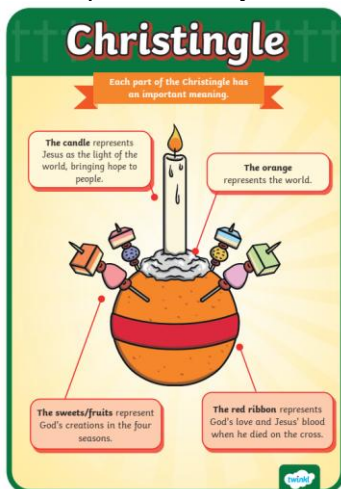
RESPECT | ASPIRATION | RESILIENCE

## PARENT BULLETIN 14

### 12 December 2025

Dear Parents/Carers,

We had our Reception singing and our KST 1 Nativities this week. The children were fabulous; it is the first time some of them have been on stage or performed in front of anyone we are so proud of them and loved watching them perform for you all.



We had our Year 3 Christingle this week as well. Never have I seen so many oranges in one place as I have in the Year 3 classrooms this week! A big thank you to the Year 3 team who have done a fantastic job and to Tesco Broadfields for supporting us each year.

Christmas Lunch was on Wednesday. A huge thank you to our catering staff who did an amazing job as always. It is always lovely to see staff and children sitting together to enjoy a meal, singing carols and pulling crackers, we are all so grateful. We did have our rather large Elf appear to hand out crackers and make sure that everyone is jolly. Father Christmas visited

Preschool and Reception to do a final check of his list.

This year we are donating to the **Pepper Foundation**, a charity close to our hearts who support children and their families who have life long or life limiting illnesses. If your child wore a Christmas Jumper to school on Wednesday please support the charity.

If you have donated thank you so much, if you are yet to donate, please scan the QR code or follow the link to the donation page to donate £2 or as much as you can to make the holiday period a happy time for all children.

Donate by scanning this QR code



**Christmas jumper day fundraiser**, and it's really easy to participate.

- Scan the QR code to donate £2 (or [use this link](#))



As well as a delicious lunch the children were also able to wear Christmas jumpers, it was lovely to see the array of design and slogans. We have a small collection of spare jumpers for children who didn't have one on the day. If your child has borrowed a jumper please can we ask that you wash it and return it to school. If your child has outgrown their Christmas jumper, we would really appreciate any donations to our Christmas Jumper market stall, we are in particular need for sizes age 8 upwards. Any donation will be gratefully received.

A reminder on our last week of term that there are **no clubs next week**.



A reminder that we have our Year 4 & 5 Carol concerts next week and the cross-phase concert that our Year 6's take part in. We will have a collection at all the events to raise funds to replenish our nativity costumes.

### **Timings for 19 December 2025**

#### **Lunch times:**

- Reception - 11.00am
- Year 1 & 2 - 11.20am
- Year 3 & 4 - 11.40am (packed lunches in classroom due to numbers)
- Year 5 & 6 - 11.55am

#### **Exit times:**

- Reception - 12.00pm
- Year 1 & 2 & 5 - 12.10pm
- Year 3 & 4 - 12.20pm
- Year 6 - 12.25pm

Our choir continue to entertain the local community and have been doing a wonderful job at local events. It is always such a treat for everyone that they sing for and we always get such lovely compliments on their singing as well as their behaviour, they are a credit to you all (as well as being super talented).



Please can we remind parents that any non-essential appointments must be made outside of school hours. As a school, we authorise absence for illness, medical appointments that cannot be scheduled outside of the school day, religious observances and exceptional circumstances at the discretion of the

Headteacher. We are also as accommodating as we can be when unavoidable emergencies happen. It is vital that your child is in school as much as possible in order to maximise learning. When children are taken out part way through the day, it disrupts their day, as well as the lesson they are in. Please ensure all non-essential appointments are made outside of school hours.

The seasonal sickness is doing the rounds for staff as well as children. Please can we remind all parents that if your child has been sick/vomiting or has diarrhoea please **do not** send them into school. Sickness and diarrhoea spreads quickly with children and adults. It is imperative that they are kept at home for 48hrs from the last bout of illness. If they are sick or have diarrhoea again then the 48hrs starts again. This spread of illness impacts staff as well, this includes coughs and colds, we have had extremely high levels of staff sickness alongside the children and ultimately it is the rest of the children who are impacted in their learning.

We must also remember that in school we have immune compromised staff and children who can become seriously ill. We must all be responsible for minimising the risk and stopping the spread of infection.



#### AVA PTA

<https://join.easyfundraising.org.uk/aylesbury-vale-academy-pta/j3tk26/at/EDA0jpqh/DM1329426/facebook/>

If you are interested in joining our wonderful PTA please email [ava.pta@hotmail.com](mailto:ava.pta@hotmail.com)

#### Reflection

##### THE THIRD SUNDAY IN ADVENT

On Sunday 14th December Christians around the world will celebrate the Third Sunday in 'Advent'. 'Advent' is the Christian season of preparation for Christmas, it is a time of reflection on the birth of Jesus. During the advent season it is traditional to light a candle each week as part of the preparations for Christmas Day.

Lighting a candle is a simple yet profound act. It is a testimony to the power of light over darkness. The lighting of each candle is a symbol of the journey towards Christmas, a day of joy and celebration.

This week we invite our AVA community to join in a reflection for Advent and reflect on the lighting of the third candle in Advent.



*The third candle on the Advent wreath is called **the Shepherds' Candle**, symbolizing **joy**;*

*Three candles, burning bright,  
Chasing away the darkness from light.  
Three candles, glowing bright,  
The blessing of God, giving new sight.*

Photo [www.freepik.com](http://www.freepik.com)

##### A Prayer for the third candle of Advent

Loving God,  
On this Third Sunday in Advent, we acknowledge your care and love for us.  
With joy we acknowledge that our help is in you.  
Grant us joy that lasts long beyond this Christmas season and that equips us to face the new year.  
Amen.



## HAPPY HANUKKAH!

This week we wish our Jewish Community a 'Happy Hanukkah' or 'Hanukkah sameach!'

The first candle of Hanukkah will be lit at nightfall on Sunday 14th December.

This marks the beginning of the eight-day festival of Hanukkah, which concludes on December 22nd.

The festival commemorates the rededication of the Second Temple in Jerusalem and celebrates the triumph of light over darkness.

It marks the victory of the Maccabees and the miracle of the oil that lasted for eight days.

We wish our Jewish community 'Chag urim sameach!' which means 'Happy Festival of Lights'.



Photo [www.freepik.com](http://www.freepik.com)

Best wishes,  
**Mrs C Baughan**

## **ADDITIONAL SUPPORT**

### **SEND Support Phone Line - 01296 382135**

We are open every day between 10am and 4pm and until 6pm on Tuesdays. The line is for parents, professionals and anyone with enquiries about SEND in Buckinghamshire.

Please note that the support line is open between 10am and 2pm during school holidays and is closed on Bank Holidays.

### **Primary SEND concerns**

[https://forms.office.com/pages/responsepage.aspx?id=vujYj3JiOk-ROacP9\\_VtsKSZm5ilcidJig5HlgRJQUZUMEVCuk1PMUZXTq1UIIUUVBaSFNYUFICMi4u&web=1&wdLOR=cA359AD1B-53A8-5F47-9B1A-80EC4AFA2E4C](https://forms.office.com/pages/responsepage.aspx?id=vujYj3JiOk-ROacP9_VtsKSZm5ilcidJig5HlgRJQUZUMEVCuk1PMUZXTq1UIIUUVBaSFNYUFICMi4u&web=1&wdLOR=cA359AD1B-53A8-5F47-9B1A-80EC4AFA2E4C)

### **Free School Meals**

Please find the link below: <https://www.theacademy.me/page/?title=SCHOOL+MEALS&pid=166>

We also have a dedicated FSM inbox - [freeschoolmeals@theacademy.me](mailto:freeschoolmeals@theacademy.me) - where parents can submit FSM forms if you prefer to complete the paper version instead of the online form.

### **Report Parking Issues**

<https://www.buckinghamshire.gov.uk/parking-roads-and-transport/parking/tell-us-about-a-parking-problem/>

## **ADDITIONAL SUPPORT OVER CHRISTMAS**

### **Community Services in Bucks**

**Helping Hand:** 01296 531151, [helpinghands@buckinghamshire.gov.uk](mailto:helpinghands@buckinghamshire.gov.uk). Anyone worried about food or warmth over the Christmas holidays, and not sure what help is available, can contact Bucks Council's Helping Hand support line (above).

This line is open 9am – 5.30pm Monday to Thursday and 9am – 5pm on Friday. The support line is closed on Christmas day, Boxing Day, Monday 28 December and New Year's day but the out of hours team can be contacted in emergencies on 0800 999 7677.

### **Community Services in Aylesbury**

**Mind the Gap Peer Support:** BBs Café, Aylesbury, Pauline Hayden, 07788438134. Social group: Wednesday 29<sup>th</sup> December 2-4pm (active Mind the Gap and Wellbeing group members ONLY) booking essential.

**St Mary's Aylesbury:** 07714 246593 / 01296 437641. Providing hampers to those in need of help this Christmas (call to enquire).

**House of Mercy:** Aylesbury Tel: **Mobile 1:** 07985636361 **Mobile 2:** 07506680717. Weekly Food donation.



[Christmas Service Information - One Recovery Bucks](#)

[Christmas Angels | Buckinghamshire Council](#)

# THE ROTARY CLUB OF AYLESBURY CAROL FLOAT 2025



HO HO HO Santa is almost ready for his annual visit to Aylesbury.

From Sunday 7<sup>th</sup> December Santa as usual will be visiting the estates of Aylesbury and the High Street. His helpers will be present with their collecting buckets, card readers, QR codes collecting for our local charities and foodbanks.

So remember to put the dates in your diaries! The visits at the weekend will start around 5.30pm

The visits on weekdays will start around 6pm. All rounds must finish by 8pm (a licencing requirement).

## ROUTES

Sunday December 7 <sup>th</sup>	MEADOWCROFT & QUARRENDON
Monday December 8 <sup>th</sup>	HAWKESLADE
Tuesday December 9 <sup>th</sup>	THE COPPICE / IVINGHOE VIEW
Thursday December 11 <sup>th</sup>	SOUTHCOURT
Saturday December 13 <sup>th</sup>	WEEDON RD/SAVERNAKE
Tuesday December 16 <sup>th</sup>	HAYDON HILL
Wednesday December 17 <sup>th</sup>	ELM FARM NORTH
Thursday December 18 <sup>th</sup>	WATERMEAD SOUTH
Saturday December 20 <sup>th</sup>	AYLESBURY HIGH STREET 10am -4pm

**More details for each route will be posted on our Facebook page and new website in December and hopefully the Tracker will work.**

<b>FB</b>	<b>ROTARY CLUB OF AYLESBURY</b>
<b>Web Site</b>	<b>ROTARY CLUB of AYLESBURY - welcome</b>